

Service manual Careturn- er for Wissner-Bosserhoff Sentida 6



Actuator replacement

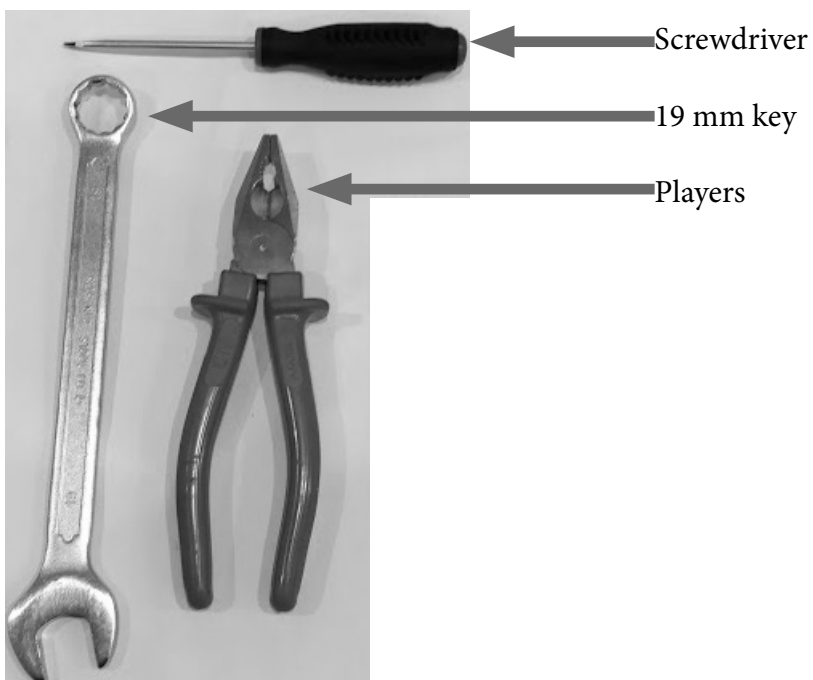
Linak motor. Power: 2500 N. IP x6

GDV Article No: LIN230409



Removing the actuator

1. Tools



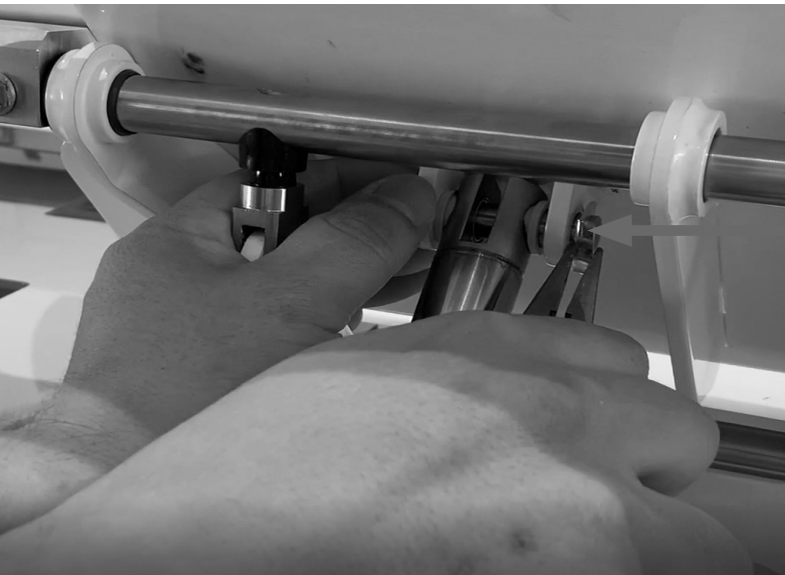
2. Secure the wing in the upper position



Extend the wing in the upper position

Secure the wing in order to access the actuator, use a 19 mm key, by placing it under the wing and resting on the main module

3. Remove the kl retainer



Remove the kl safety retainer from the clevis pin, using a pair of pliers.

4. Remove the clevis pin



Take out the clevis pin.

5. Remove the actuator pin



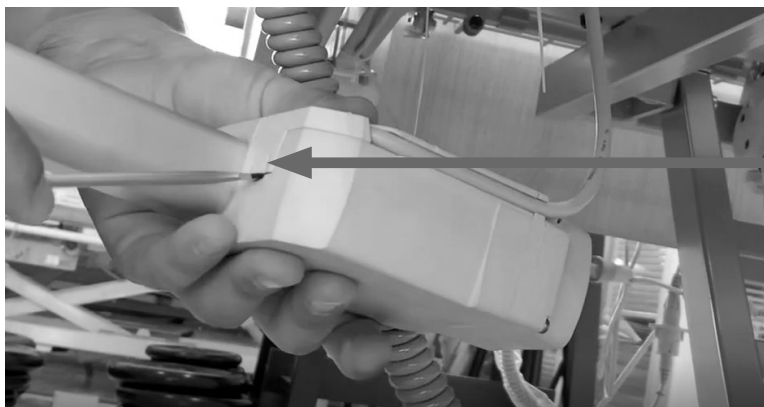
Take out the actuator pin in order to remove the actuator.

6. Remove the actuator out of the support

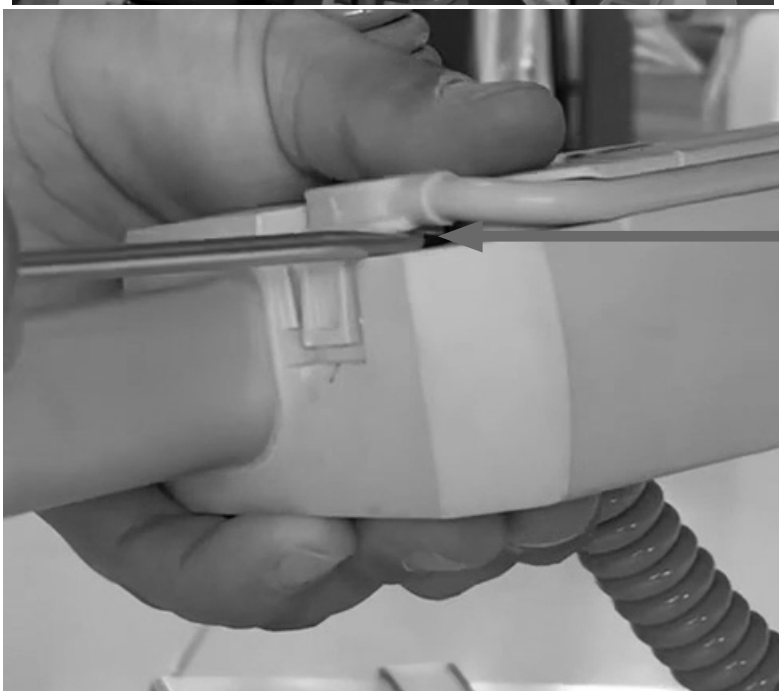


Take out the actuator, if needed loosen the actuator cable by cutting the plastic strip that holds it.

7. Remove the cable



Use the screwdriver to remove the safety plastic from the cable, be careful not to damage the cable.



Use the screwdriver to remove the cable, be careful not to damage the cable.

Placing back the new actuator

To place back the new actuator follow the steps in reverse.

Most common fails/wear on the components

1. Hinges fail and plastic sliders on the arms



← The hinges supporting the top plate on the arms can get damaged. Can be order together with the arm via spare parts.

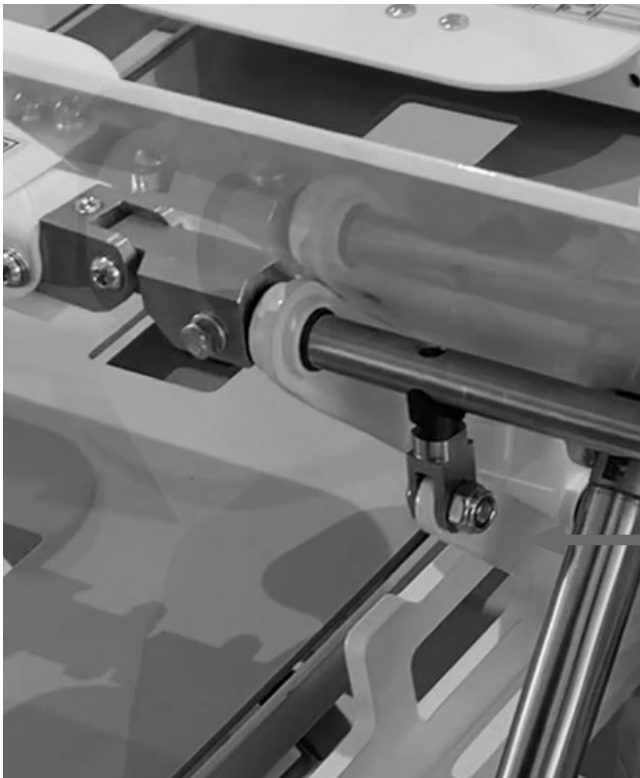
← There is a higher risk of wear in the plastic sliders on the arms. Can be ordered via spare parts catalogue.

2. Actuator cable



← The cable of the actuator can be damaged or pinched. The connection pins might get damaged due to wear.

3. Angle Rod



The angle rod assembly can be bended, due to cyclic exposure of high load.

4. Arms



Check that they are mounted correct left, right , lock nut on the connection bolt with the main unit can be loose.

Plastic sliders to be checked, if they are broken or loose.

Check that they are levelled with the bed, in case that they are not tighten or loosen adjustment set screw.

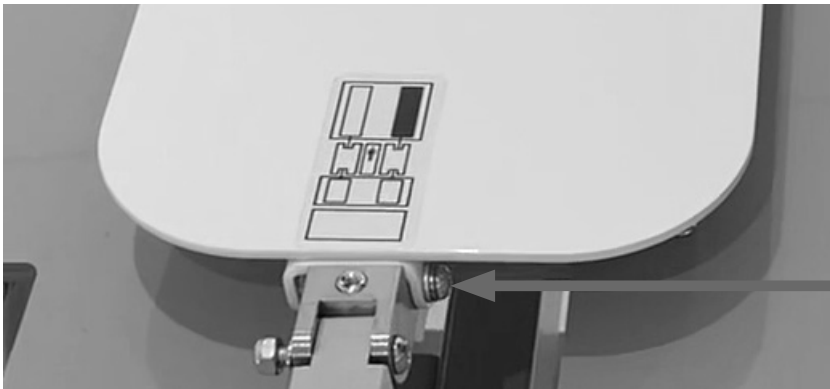
5. General check on the bolts that can be loose



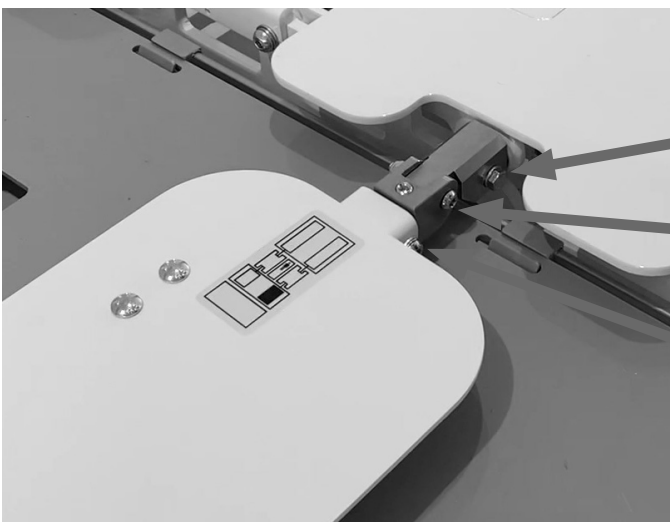
Head Arms

The bolts that support the arms to the main module can get loose. Periodic check.

Make sure that the bolts on the main module bracket are tighten as they can get loose due to cyclic use.



The bolts on the arm bracket can get loose due to weight on arms, periodic check.



Foot arms

Make sure that the bolts on the main module bracket are tighten as they can get loose due to cyclic use.

The bolts that support the arms to the main module can get loose. Periodic check.

Check the bolts on the bracket, periodic check.



There is a risk that bolts on the axles to get loose, tighten them on both sides of the main module.

6. Control Box

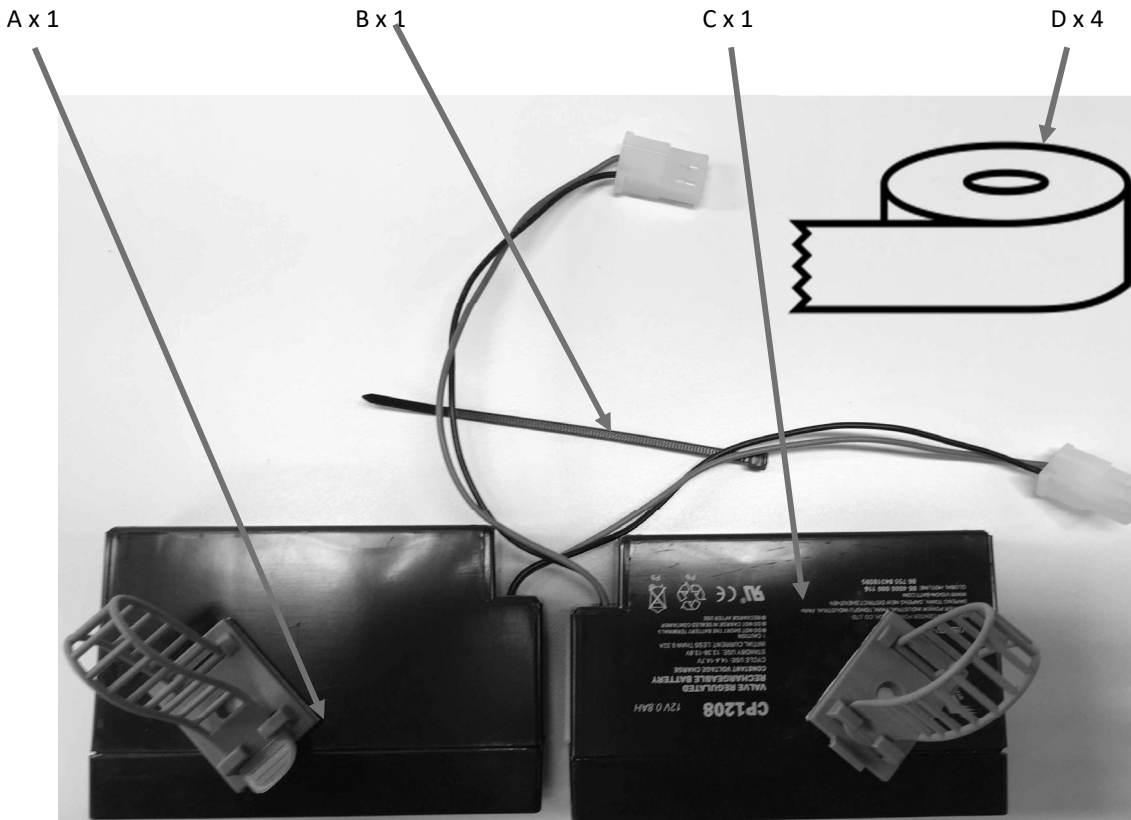
Errors on the screen (check user manual for the error codes).
Cables squeezed or broken, loose connection between the cables.
Loose support frame.

6.1 Troubleshoot the electrical system

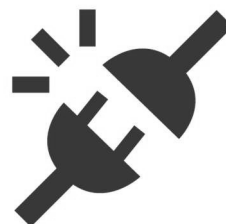
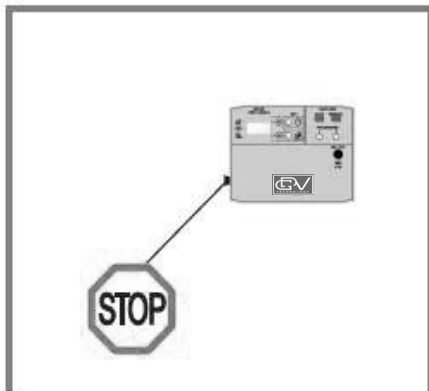
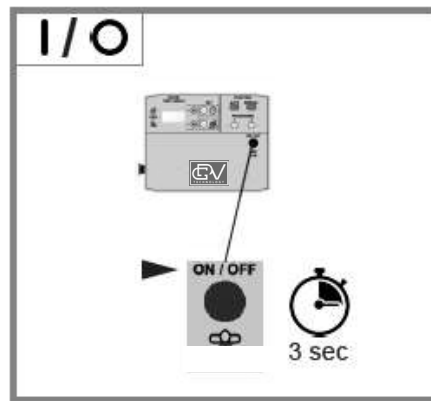
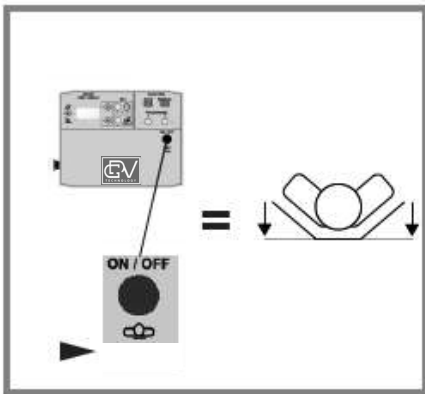
- If the electrical system does not work try to change the control box from another Careturner if it is possible, to check if the control box is faulty.
- If E01 is shown on the control box display, check the left motor cable (marked with number 2) for damages and connection to the motor and control box. Switch the right and left motor cables at the control box, if the error code is the same there is something wrong with the control box, else something might be wrong with the left motor.
- If E02 is shown on the control box display, check the right motor cable (marked with number 1) for damages and connection to the motor and control box. Switch the left and right motor cables at the control box, if the error code is the same there is something wrong with the control box, else something might be wrong with the right motor.
- Reset the system.



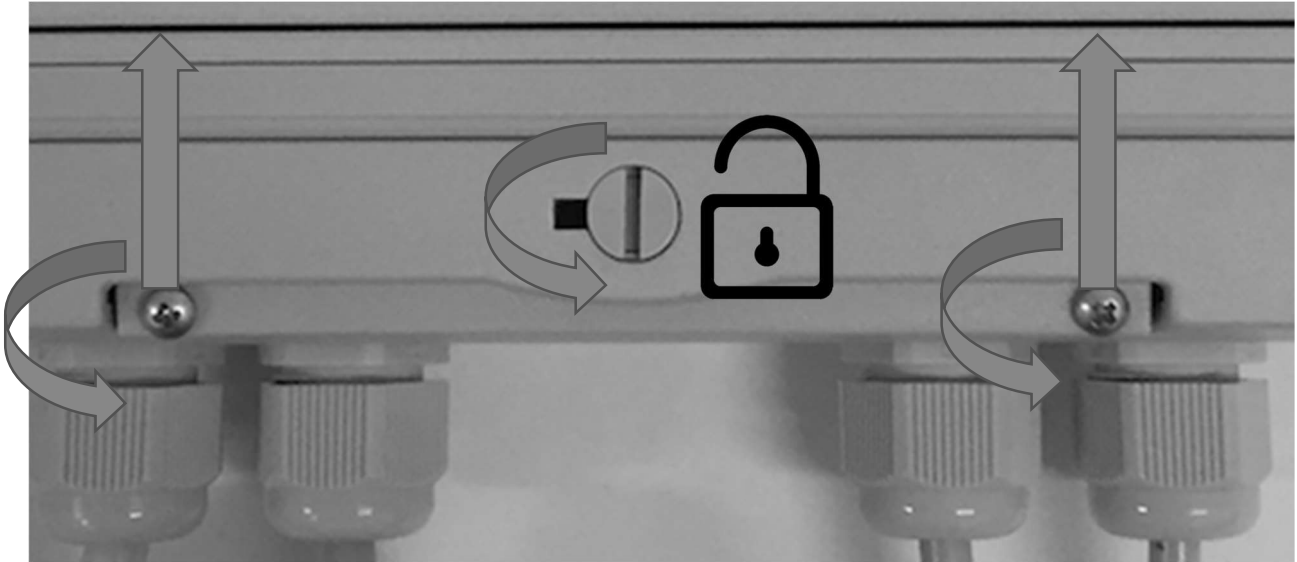
7. Exchange of battery - Careturner



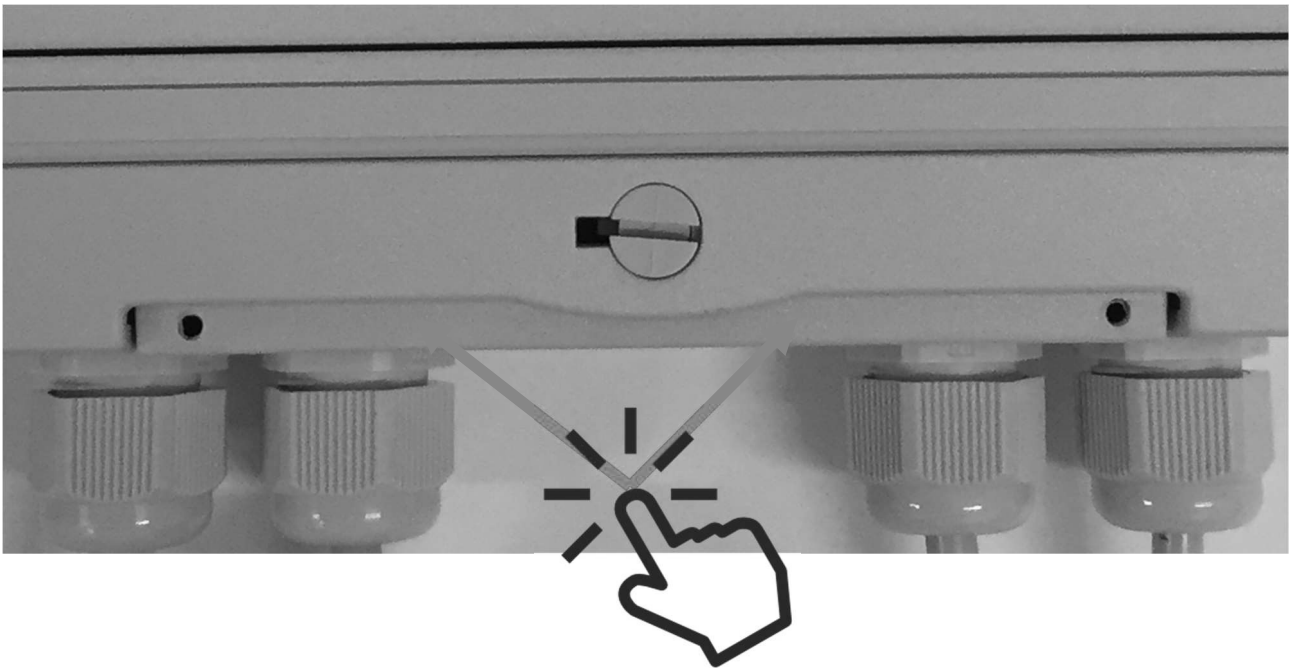
1.



2.

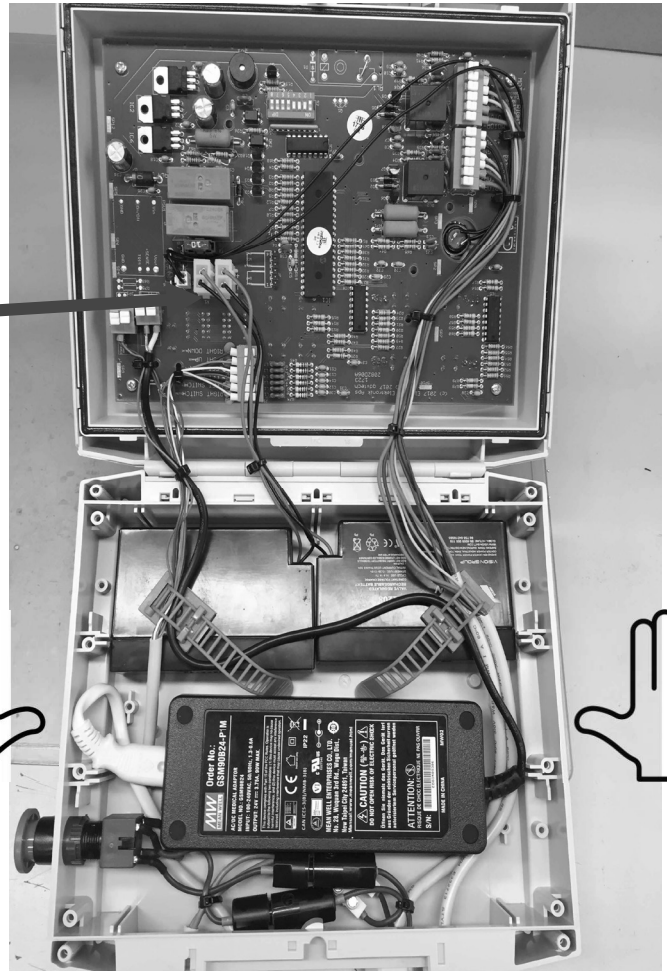
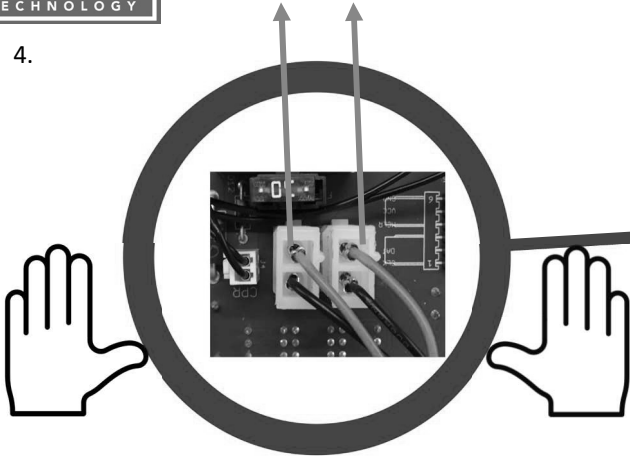


3.

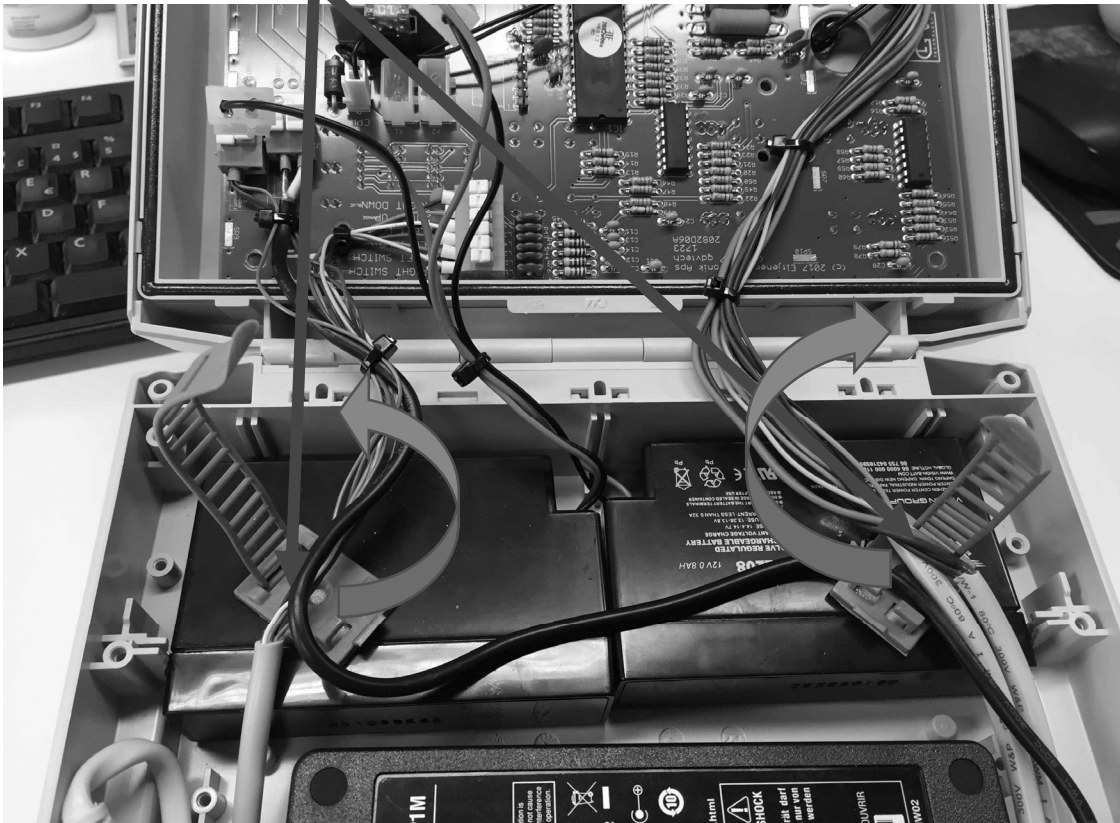




4.



5.



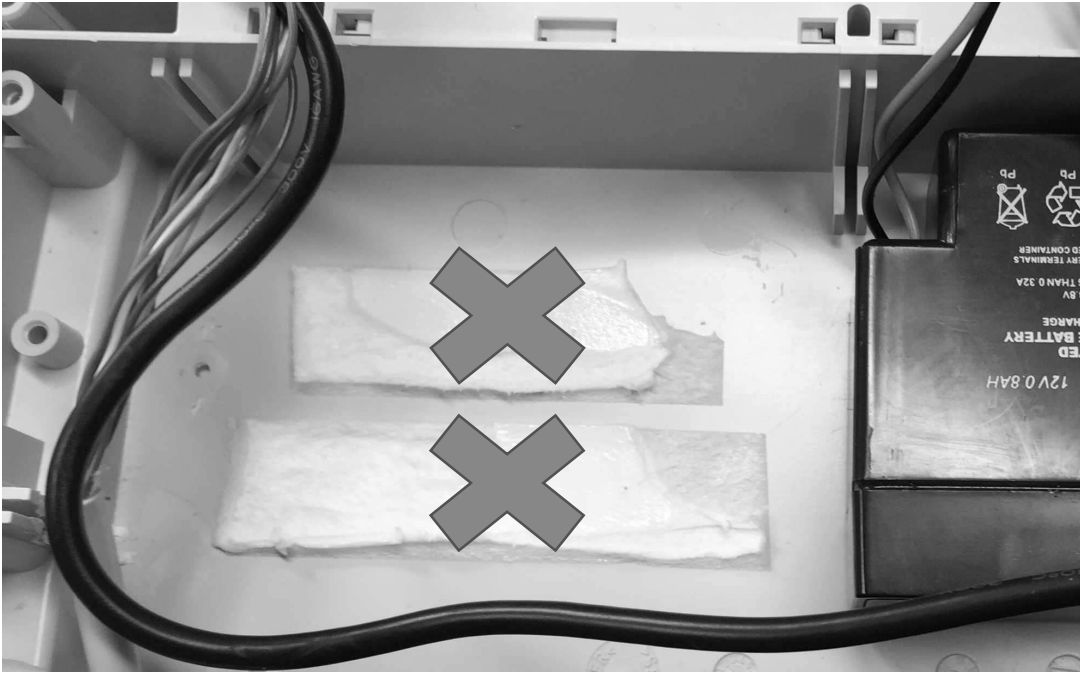
6.



7.



8.



9.



10.



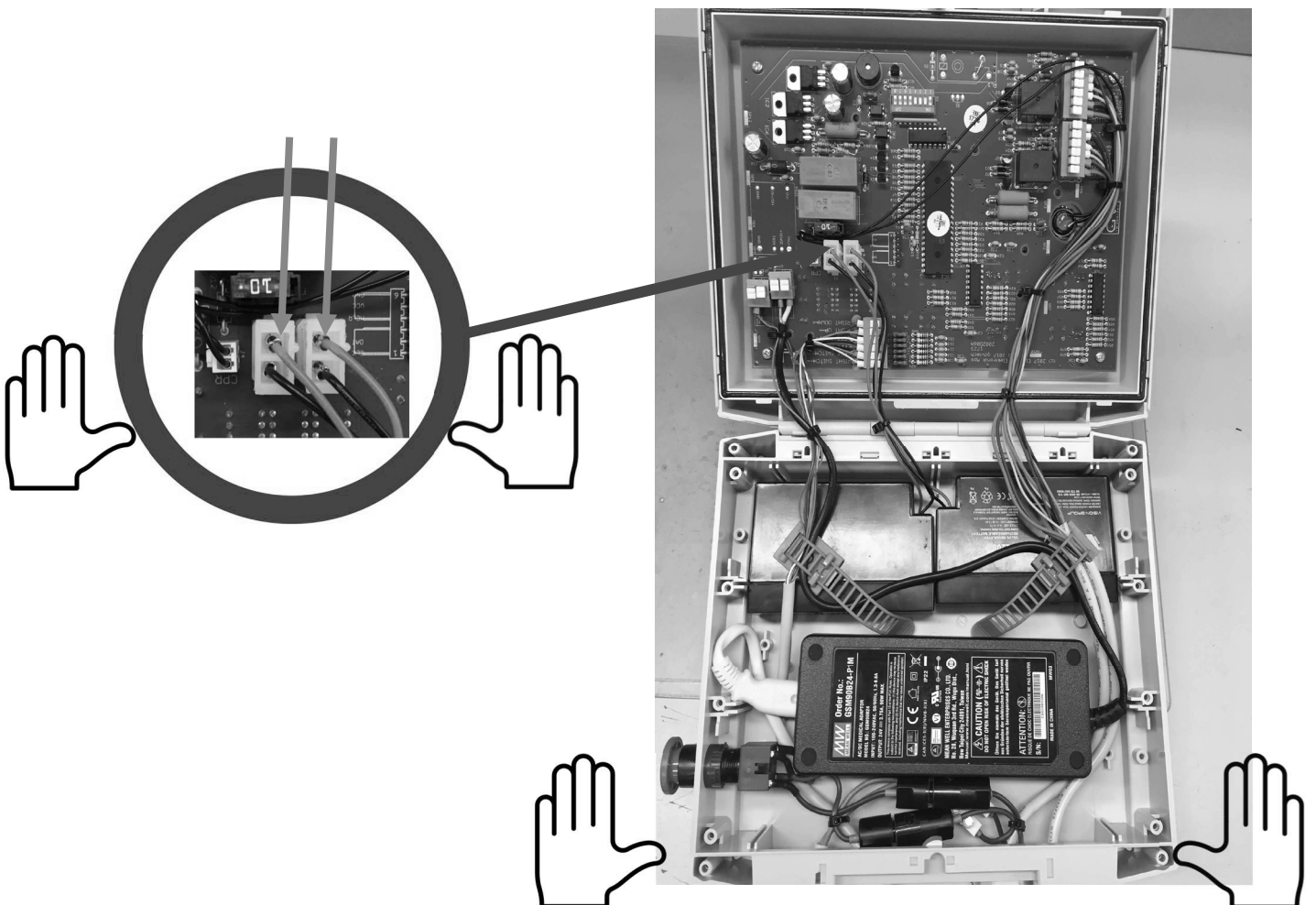
11.



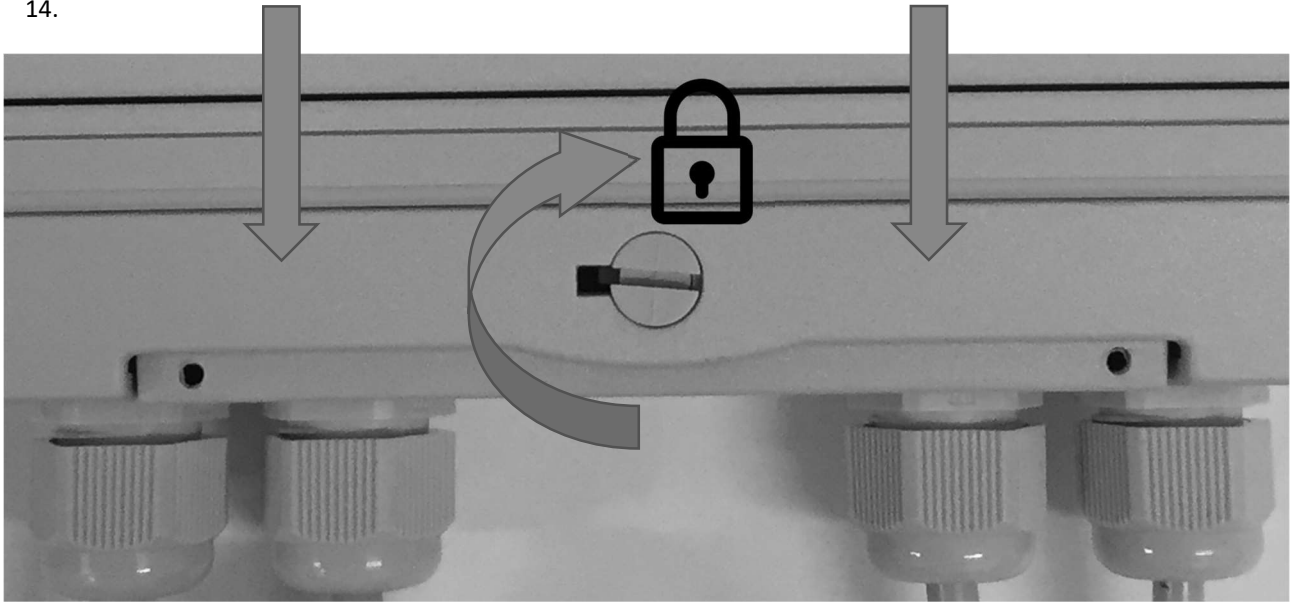
12.



13.



14.



15.

